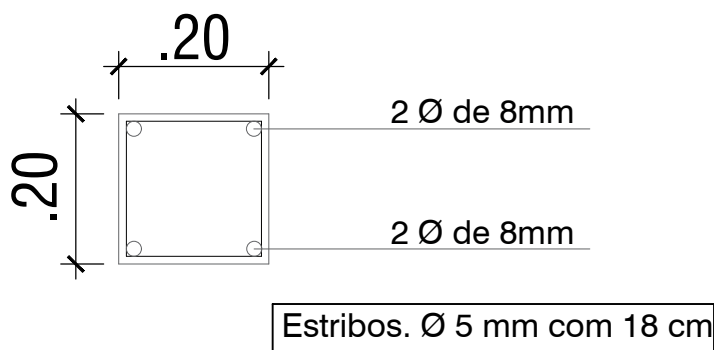


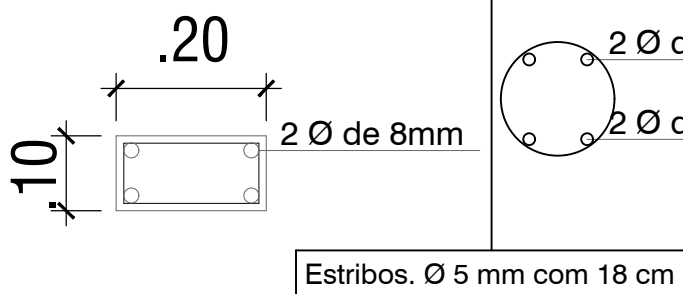
PLANTA BAIXA
Sem escala

ESCOLA DONA CAROLINA

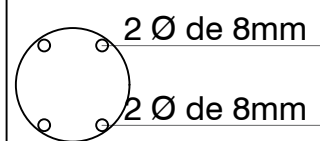
PILAR DE CONCRETO



CINTA DE CONCRETO

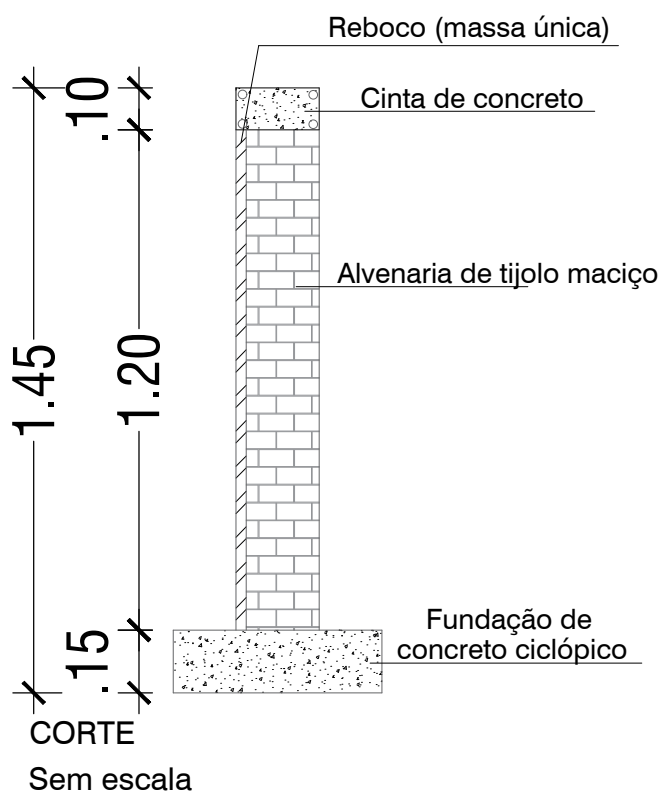


ESTACA



PILAR E CINTA DE CONCRETO

Sem escala



PREFEITURA MUNICIPAL DE PALMEIRA DAS MISSÕES -RS
SECRETARIA DE PLANEJAMENTO URBANO

Muro de Alvenaria de Tijolo Maciço

Escola Municipal Dona Carolina

Responsável Téc.: Eng. Civil Elton Miranda Ass: _____

Data: 25/01/2019

Desenho: Magali Schaffer